

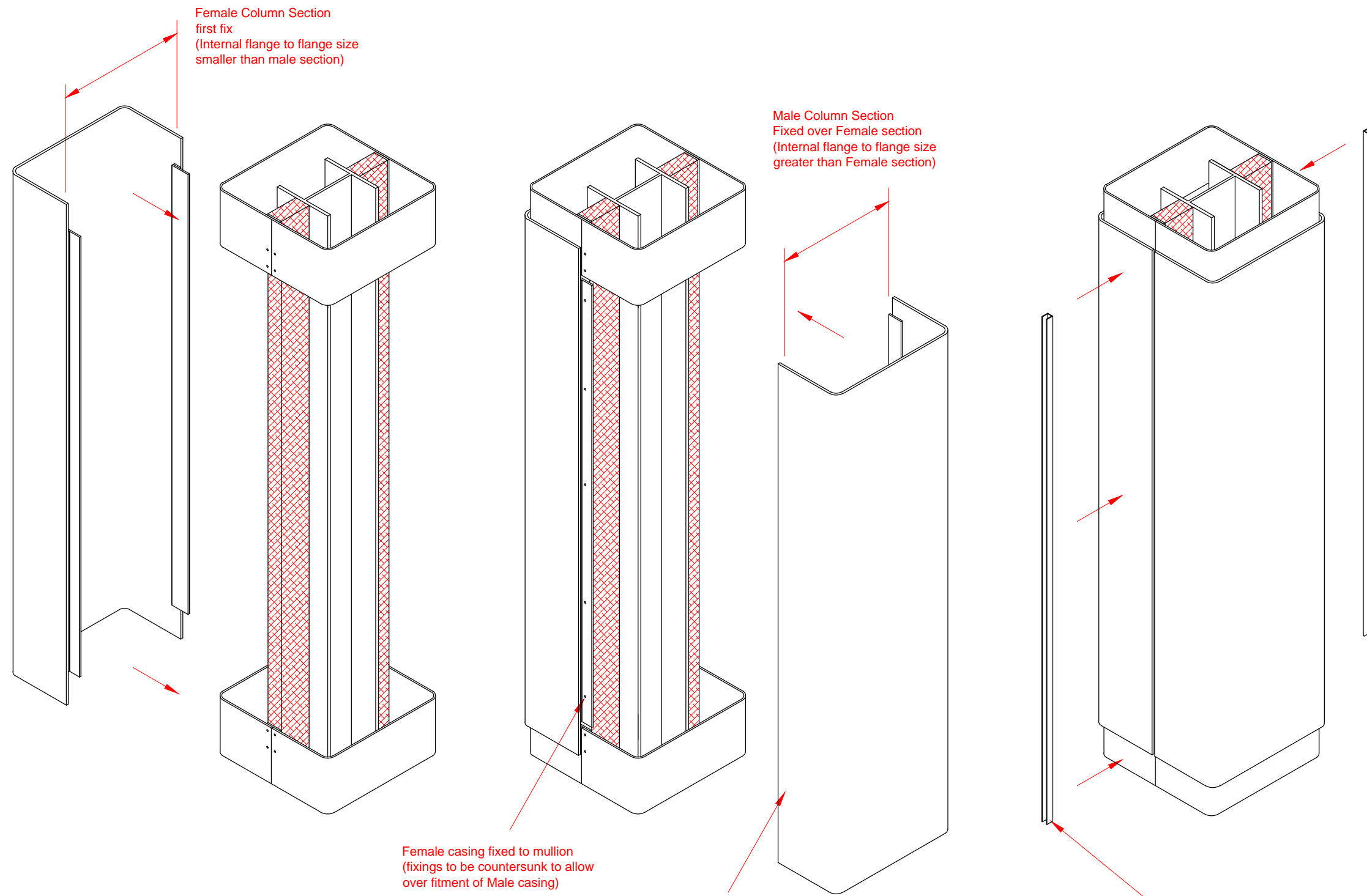
Pendock, Halesfield 19, Telford, Shropshire, TF7 4QT.
 T 01952 580590
 F 01952 587805
 E sales@pendock.co.uk
 W www.pendock.co.uk

THIS DRAWING MUST NOT BE SCALED

© COPYRIGHT TP MANUFACTURING LTD.

THIS DRAWING MUST BE REVIEWED IN CONJUNCTION WITH ANY SUPPORTING QUOTATIONS REFERENCED.
 THE DESIGN DETAILED IN THIS DRAWING FORMS PART OF A PROPOSED SOLUTION.
 ALL QUANTITIES AND MEASUREMENTS MUST BE CHECKED IN CONJUNCTION WITH SUPPORTING QUOTATION AGAINST CLIENTS REQUIREMENTS. SPECIFIC CONSIDERATION SHOULD BE GIVEN TO DIMENSIONAL ACCURACY (INCLUDING INT. CLEARANCE).
 PENDOCK SHALL NOT BE LIABLE FOR ANY CLAIM ARISING OUT OF THE USE OF THIS DESIGN IN A SCHEME NOT APPROVED IN WRITING BY PENDOCK.
 THIS DRAWING MUST NOT BE LENT OR COPIED, AND THE DESIGN MUST NOT BE COPIED. COPYRIGHT AND DESIGN RIGHT IN THIS DRAWING RESTS WITH PENDOCK.
 THE CUSTOMER OR ITS CONTRACTOR OR AGENT IS RESPONSIBLE FOR VERIFYING THE ACCURACY AND SUITABILITY OF THE DESIGN IN THIS DRAWING.
 PENDOCK STANDARD TERMS AND CONDITIONS, DETAILED ON SUPPORTING QUOTATIONS APPLY.

NOTES



Female Column Section
 first fix
 (Internal flange to flange size
 smaller than male section)

Male Column Section
 Fixed over Female section
 (Internal flange to flange size
 greater than Female section)

Female casing fixed to mullion
 (fixings to be countersunk to allow
 over fitment of Male casing)

Male casing located over Female
 flange and fixed into mullion
 through Female joint.
 (Avoid the same drilling position
 as the Female section)

Feature Joints: (See Sheet 4)

Using the Timber mullion as a spline offer the Female enclosure (smaller internal across joint dimension) so that the required amount of inner collar is revealed. Screw through the joint and into the mullion. Countersunk screws are required for this first section as the second section locates on top of the flange.

Offer the second half of the enclosure (Male section) using a tourniquet to hold both halves into place, screwfix through joint into the Timber mullion. Avoid the same drilling position as the Female section

Insert feature joint cover strips to cover fixings and use a suitable mastic to hold into place. The feature joint is not a compression fit and will require mastic, a small self tapping screw can be used at the head and base to aid securing.

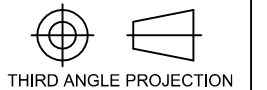
J2 Black uPVC has a MDF packing strip supplied with double sided tape.

J3 Aluminium Top Hat fixed using countersunk screws (Optional internal laminate strip can be provided to cover screw heads)

J5 Laminated joint. Main column edges supplied laminated with a loose laminate strip to cover screw heads.

REV	DATE	BY	APP

GENERAL INFORMATION
 ALL DIMENSIONS IN MM
 UNLESS OTHERWISE STATED



DATE
 27.8.14

DRAWN
 SL

CHECKED

APPROVED

CLIENT/PROJECT

SQ Columns

PROJECT DETAILS

Pendock Column Casings

SCALE nts

SHEET 3 OF 4

A3

DWG No.

Fitment Guide

REV