

Pendock, Halesfield 19, Telford, Shropshire, TF7 4QT.
 T 01952 580590
 F 01952 587805
 E sales@pendock.co.uk
 W www.pendock.co.uk

THIS DRAWING MUST NOT BE SCALED

© COPYRIGHT TP MANUFACTURING LTD.

THIS DRAWING MUST BE REVIEWED IN CONJUNCTION WITH ANY SUPPORTING QUOTATIONS REFERENCED.

THE DESIGN DETAILED IN THIS DRAWING FORMS PART OF A PROPOSED SOLUTION.

ALL QUANTITIES AND MEASUREMENTS MUST BE CHECKED IN CONJUNCTION WITH SUPPORTING QUOTATION AGAINST CLIENTS REQUIREMENTS. SPECIFIC CONSIDERATION SHOULD BE GIVEN TO DIMENSIONAL ACCURACY (INCLUDING INT. CLEARANCE).

PENDOCK SHALL NOT BE LIABLE FOR ANY CLAIM ARISING OUT OF THE USE OF THIS DESIGN IN A SCHEME NOT APPROVED IN WRITING BY PENDOCK.

THIS DRAWING MUST NOT BE LENT OR COPIED, AND THE DESIGN MUST NOT BE COPIED. COPYRIGHT AND DESIGN RIGHT IN THIS DRAWING RESTS WITH PENDOCK.

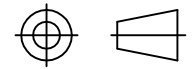
THE CUSTOMER OR ITS CONTRACTOR OR AGENT IS RESPONSIBLE FOR VERIFYING THE ACCURACY AND SUITABILITY OF THE DESIGN IN THIS DRAWING.

PENDOCK STANDARD TERMS AND CONDITIONS, DETAILED ON SUPPORTING QUOTATIONS APPLY.

NOTES

--	--	--	--	--	--

REV	DATE			BY	APP
-----	------	--	--	----	-----

GENERAL INFORMATION ALL DIMENSIONS IN MM UNLESS OTHERWISE STATED		 THIRD ANGLE PROJECTION	
--	--	---	--

DATE 27.8.14	DRAWN SL	CHECKED	APPROVED
-----------------	-------------	---------	----------

CLIENT/PROJECT

SQ Columns

PROJECT DETAILS

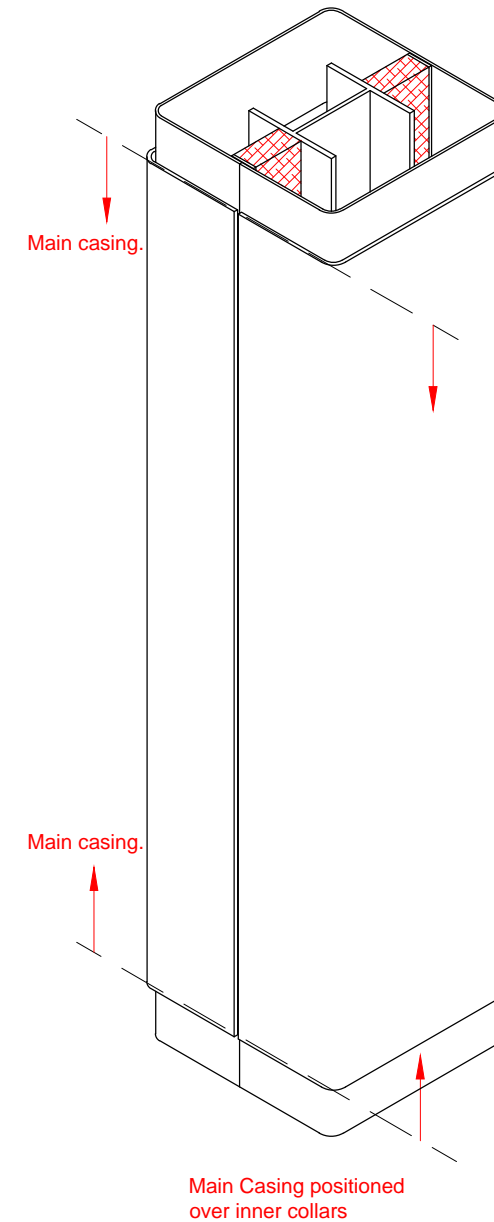
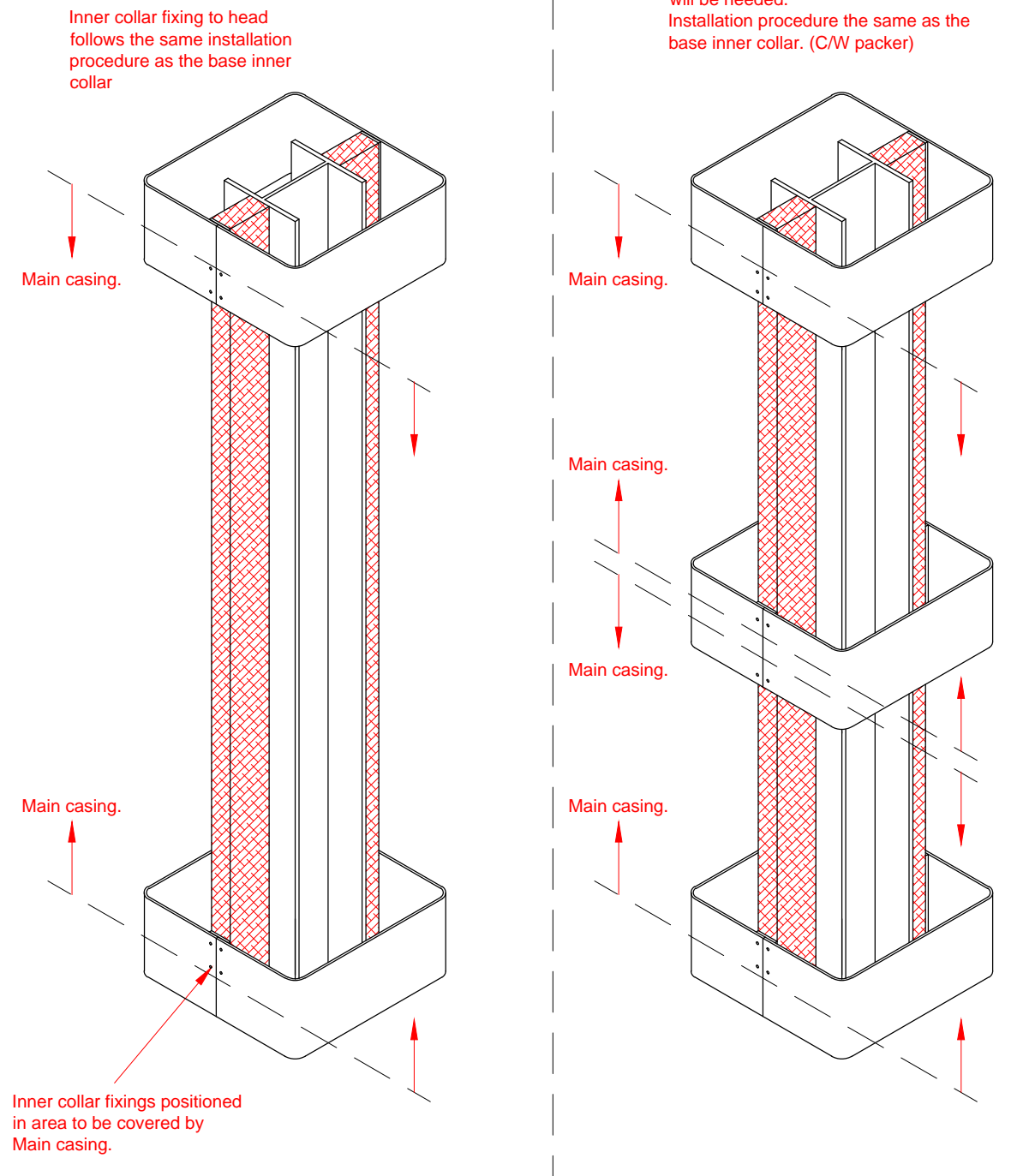
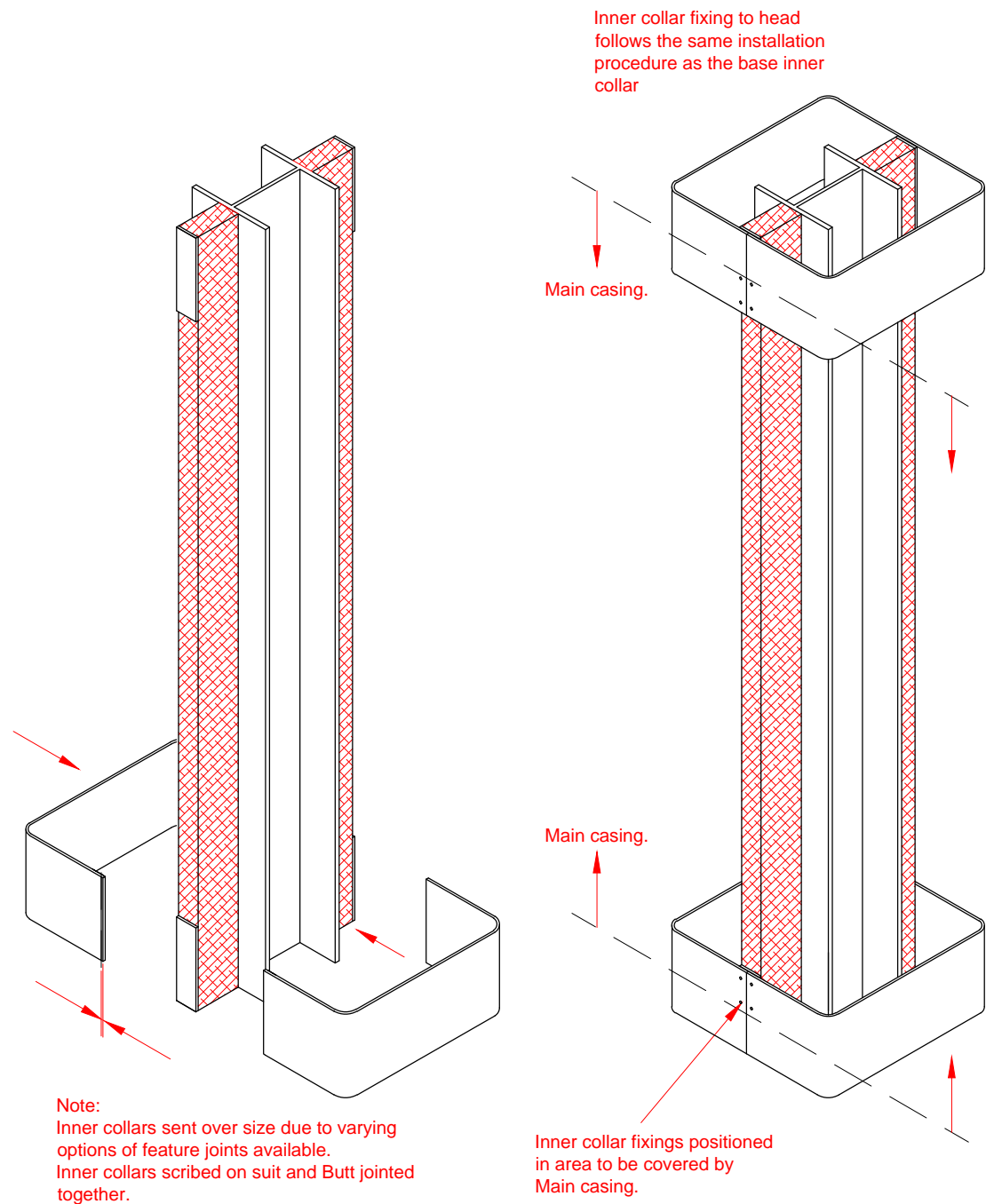
Pendock Column Casings

SCALE nts	SHEET 2 OF 4	A3
--------------	-----------------	----

DWG No.

Fitment Guide

REV



Mechanically fix inner collars to the timber mullions (c/w with packer) to head and base as required

Inner collars sent over size due to main casing feature joint options. (Width of feature joint)

Insert inner collar into main casing (making sure the inner collar is securely pressed in) align one edge with the main casing edge and the opposite side to the furthest edge of the joint overhang (Male section) and trim to suit.
Repeat for both halves.

Only place the fixings in the areas that will be covered by the main casing enclosure.
(fixings to be countersunk to allow over fitment of main enclosure)