

Pendock, Halesfield 19, Telford, Shropshire, TF7 4QT.  
 T 01952 580590  
 F 01952 587805  
 E sales@pendock.co.uk  
 W www.pendock.co.uk

**THIS DRAWING MUST NOT BE SCALED**

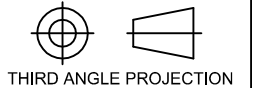
© COPYRIGHT TP MANUFACTURING

THIS DRAWING MUST BE REVIEWED IN CONJUNCTION WITH ANY SUPPORTING QUOTATIONS REFERENCED.  
 THE DESIGN DETAILED IN THIS DRAWING FORMS PART OF A PROPOSED SOLUTION.  
 ALL QUANTITIES AND MEASUREMENTS MUST BE CHECKED IN CONJUNCTION WITH SUPPORTING QUOTATION AGAINST CLIENTS REQUIREMENTS. SPECIFIC CONSIDERATION SHOULD BE GIVEN TO DIMENSIONAL ACCURACY (INCLUDING INT. CLEARANCE).  
 PENDOCK SHALL NOT BE LIABLE FOR ANY CLAIM ARISING OUT OF THE USE OF THIS DESIGN IN A SCHEME NOT APPROVED IN WRITING BY PENDOCK.  
 THIS DRAWING MUST NOT BE LENT OR COPIED, AND THE DESIGN MUST NOT BE COPIED. COPYRIGHT AND DESIGN RIGHT IN THIS DRAWING RESTS WITH PENDOCK.  
 THE CUSTOMER OR ITS CONTRACTOR OR AGENT IS RESPONSIBLE FOR VERIFYING THE ACCURACY AND SUITABILITY OF THE DESIGN IN THIS DRAWING.  
 PENDOCK STANDARD TERMS AND CONDITIONS, DETAILED ON SUPPORTING QUOTATIONS APPLY.

**NOTES**

REV	DATE	BY	APP

GENERAL INFORMATION  
 ALL DIMENSIONS IN MM  
 UNLESS OTHERWISE STATED



DATE	DRAWN	CHECKED	APPROVED
27.8.14	SL		

CLIENT/PROJECT

**Metal Columns  
 Square**

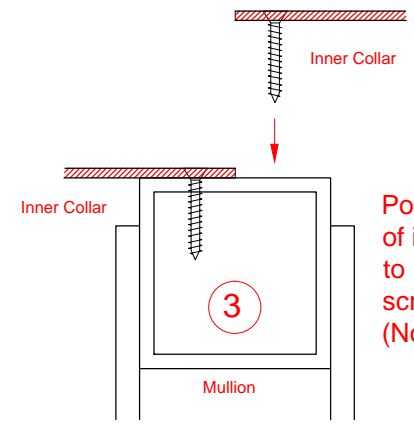
PROJECT DETAILS

**Pendock Column  
 Casings**

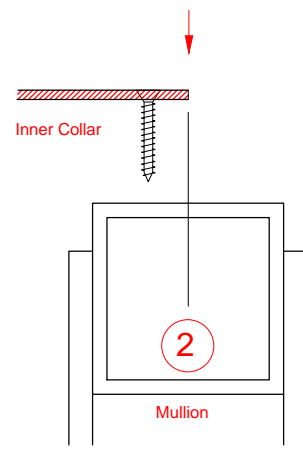
SCALE nts SHEET 4 OF 4 A3

DWG No. REV

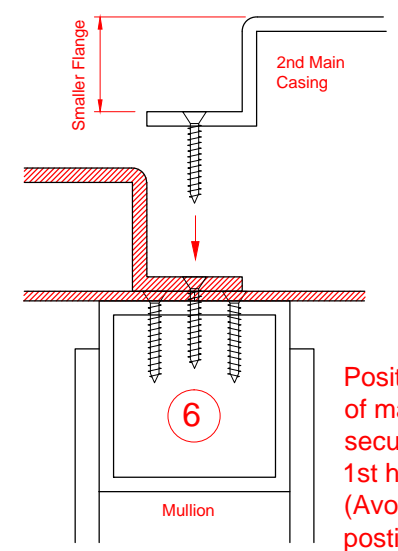
**Fitment Guide**



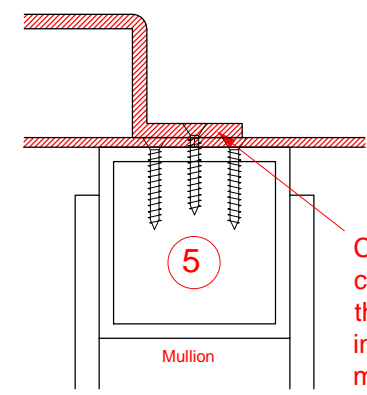
Position 2nd half of inner collar butt joint to 1st half and securely screw into mullion (Not in visible section)



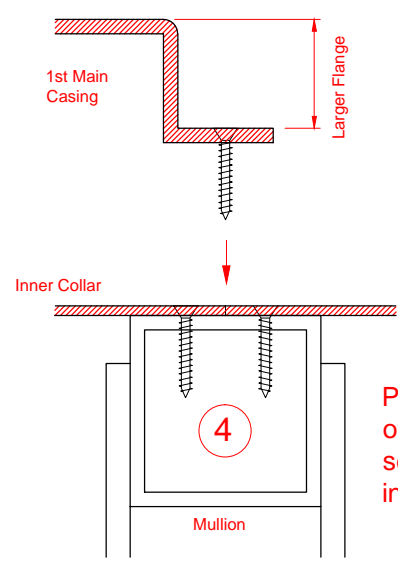
Position 1st Half of inner collar and securely screw into mullion (not in visible section)



Position 2nd Half of main casing drill and securely screw through 1st half and into mullion. (Avoid the same drilling position as the 1st half)



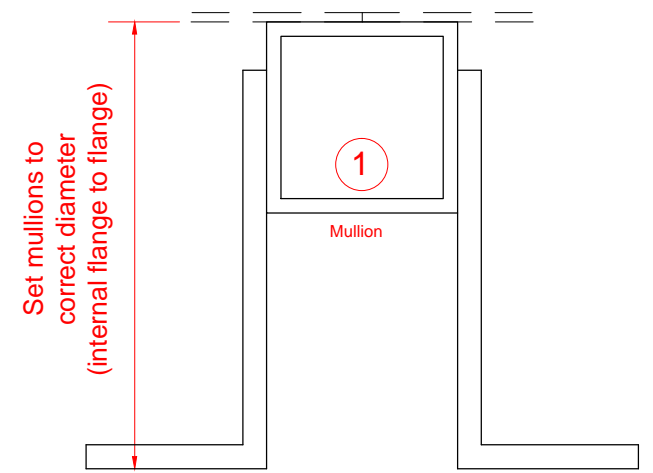
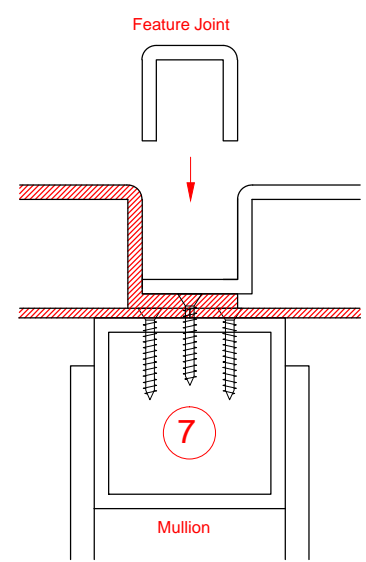
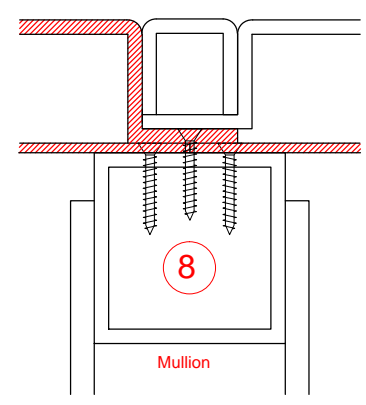
Centre section on main casing will sit the thickness of the inner collar off the mullion



Position 1st half of main casing drill and securely screw through into mullion

Feature Joint is not a compression fit and will require mastic to secure into position

A small self tapping screw can be used at the head and base of the feature joint to aid securing



Set mullions to correct diameter (internal flange to flange)