

# PENDOCK

Pendock  
 Halesfield 19, Telford, Shropshire, TF7 4QT.  
 Tel: +44 (0) 1952 580590 Fax: +44 (0) 1952 587805  
 E-mail: technical@pendock.co.uk  
 Web: www.pendock.co.uk

**THIS DRAWING MUST NOT BE SCALED**

© COPYRIGHT TP MANUFACTURING

THIS DRAWING MUST BE REVIEWED IN CONJUNCTION WITH ANY SUPPORTING QUOTATIONS REFERENCED.  
 THE DESIGN DETAILED IN THIS DRAWING FORMS PART OF A PROPOSED SOLUTION.  
 ALL QUANTITIES AND MEASUREMENTS MUST BE CHECKED IN CONJUNCTION WITH SUPPORTING QUOTATION AGAINST CLIENTS REQUIREMENTS. SPECIFIC CONSIDERATION SHOULD BE GIVEN TO DIMENSIONAL ACCURACY (INCLUDING INT. CLEARANCE).  
 PENDOCK SHALL NOT BE LIABLE FOR ANY CLAIM ARISING OUT OF THE USE OF THIS DESIGN IN A SCHEME NOT APPROVED IN WRITING BY PENDOCK.  
 THIS DRAWING MUST NOT BE LENT OR COPIED, AND THE DESIGN MUST NOT BE COPIED, COPYRIGHT AND DESIGN RIGHT IN THIS DRAWING RESTS WITH PENDOCK.  
 THE CUSTOMER OR ITS CONTRACTOR OR AGENT IS RESPONSIBLE FOR VERIFYING THE ACCURACY AND SUITABILITY OF THE DESIGN IN THIS DRAWING.  
 PENDOCK STANDARD TERMS AND CONDITIONS, DETAILED ON SUPPORTING QUOTATIONS APPLY.

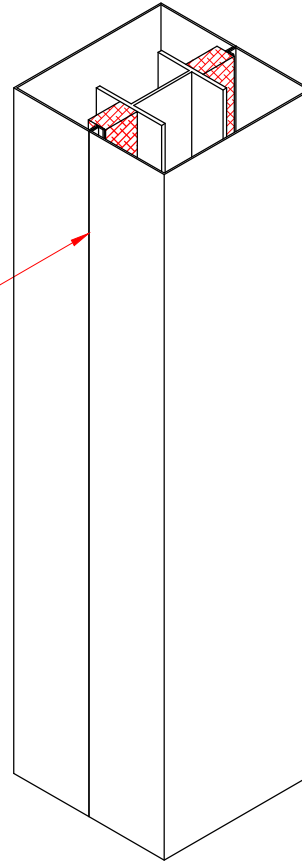
## NOTES

Notes :  
 Tourniquet strappings required to hold column together whilst adhesive is setting.

Ensure column is protected prior to attaching the strap to avoid any damage to surface.

Recommended adhesives for bonding GRP is Everbuild polyuathane 40.

For cutting a metal or down cutting (for worktops) jigsaw blade or a steel cutting disc for grinders is advised.



Column halves installed perpendicular and square to each.

--	--	--	--	--	--

REV	DATE			BY	APP
-----	------	--	--	----	-----

GENERAL INFORMATION ALL DIMENSIONS IN MM UNLESS OTHERWISE STATED		 THIRD ANGLE PROJECTION	
--	--	----------------------------	--

DATE	DRAWN	CHECKED	APPROVED
------	-------	---------	----------

CLIENT/PROJECT  
**Square GRP Column**

PROJECT DETAILS  
**Encasement Pendock Column**

SCALE	nts	SHEET	3 of 3	A4
DWG No.	Installation Guide			REV
				—