

Pendock
 Halesfield 19, Telford, Shropshire, TF7 4QT.
 Tel: +44 (0) 1952 580590 Fax: +44 (0) 1952 587805
 E-mail: technical@pendock.co.uk
 Web: www.pendock.co.uk

THIS DRAWING MUST NOT BE SCALED

© COPYRIGHT TP MANUFACTURING

THIS DRAWING MUST BE REVIEWED IN CONJUNCTION WITH ANY SUPPORTING QUOTATIONS REFERENCED.

THE DESIGN DETAILED IN THIS DRAWING FORMS PART OF A PROPOSED SOLUTION. ALL QUANTITIES AND MEASUREMENTS MUST BE CHECKED IN CONJUNCTION WITH SUPPORTING QUOTATION AGAINST CLIENTS REQUIREMENTS. SPECIFIC CONSIDERATION SHOULD BE GIVEN TO DIMENSIONAL ACCURACY (INCLUDING INT. CLEARANCE).

PENDOCK SHALL NOT BE LIABLE FOR ANY CLAIM ARISING OUT OF THE USE OF THIS DESIGN IN A SCHEME NOT APPROVED IN WRITING BY PENDOCK.

THIS DRAWING MUST NOT BE LENT OR COPIED, AND THE DESIGN MUST NOT BE COPIED, COPYRIGHT AND DESIGN RIGHT IN THIS DRAWING RESTS WITH PENDOCK.

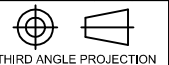
THE CUSTOMER OR ITS CONTRACTOR OR AGENT IS RESPONSIBLE FOR VERIFYING THE ACCURACY AND SUITABILITY OF THE DESIGN IN THIS DRAWING.

PENDOCK STANDARD TERMS AND CONDITIONS, DETAILED ON SUPPORTING QUOTATIONS APPLY.

NOTES

REV	DATE	BY	APP
-----	------	----	-----

GENERAL INFORMATION
 ALL DIMENSIONS IN MM
 UNLESS OTHERWISE STATED



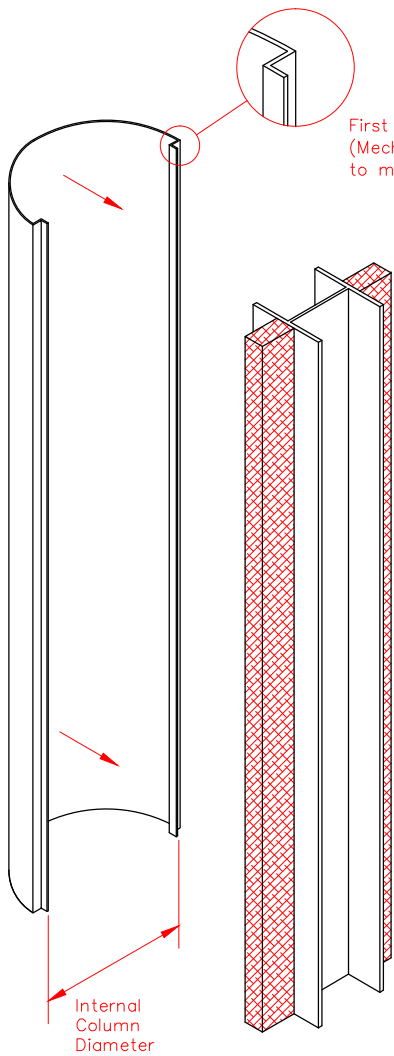
DATE	DRAWN	CHECKED	APPROVED
------	-------	---------	----------

CLIENT/PROJECT
**Circular
 GRP Column**

PROJECT DETAILS
**Encasement
 Pendock Column**

SCALE NTS	SHEET 2 of 3	A4
------------------	---------------------	----

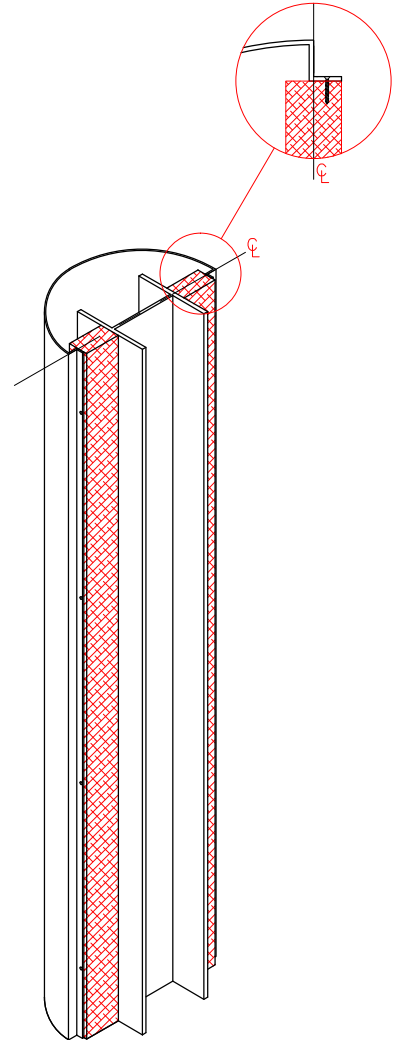
DWG No.	REV
Installation Guide	—



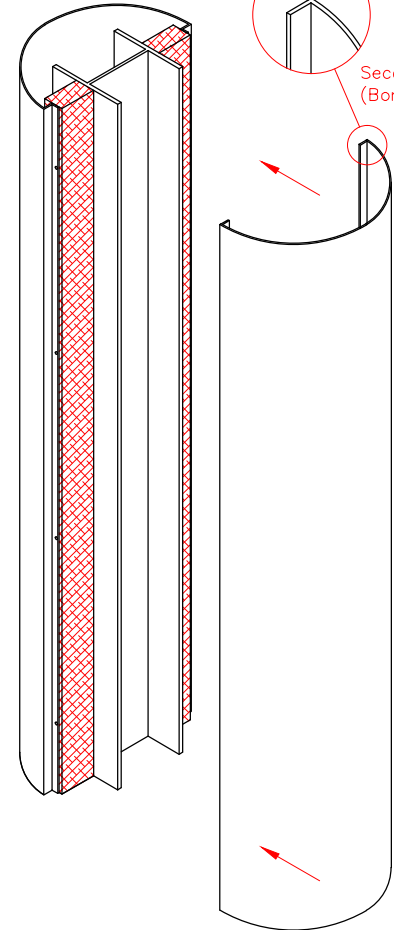
First Fix
 (Mechanically fixed to mullion)

Internal Column Diameter

Position first half of column over fixed mullions.
 Using countersunk screws screwfix through the recess flange into the timber mullion ensuring that the column is perpendicular.



Casing recess positioned on centre line of column.
 (Position can vary to suit individual projects)



Second Fix
 (Bonded to first section)