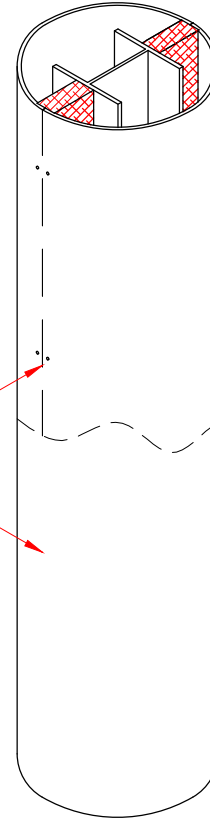


Column halves installed perpendicular and concentric to each other with suitable amount of fixings.



Fixings and joint line to be filled and sanded to provide a smooth seamless appearance.

To fill screw holes and vertical joint use Herculite Fibre Fix which is available from Builders Merchants in 25kg bags – Mix to a smooth paste, fill and sand if required.

Alternatively a fine casting plaster or polyfiller could be used.

# PENDOCK

Pendock  
Halesfield 19, Telford, Shropshire, TF7 4QT.  
Tel: +44 (0) 1952 580590 Fax: +44 (0) 1952 587805  
E-mail: technical@pendock.co.uk  
Web: www.pendock.co.uk

**THIS DRAWING MUST NOT BE SCALED**

© COPYRIGHT TP MANUFACTURING

THIS DRAWING MUST BE REVIEWED IN CONJUNCTION WITH ANY SUPPORTING QUOTATIONS REFERENCED.

THE DESIGN DETAILED IN THIS DRAWING FORMS PART OF A PROPOSED SOLUTION. ALL QUANTITIES AND MEASUREMENTS MUST BE CHECKED IN CONJUNCTION WITH SUPPORTING QUOTATION AGAINST CLIENTS REQUIREMENTS. SPECIFIC CONSIDERATION SHOULD BE GIVEN TO DIMENSIONAL ACCURACY (INCLUDING INT. CLEARANCE).

PENDOCK SHALL NOT BE LIABLE FOR ANY CLAIM ARISING OUT OF THE USE OF THIS DESIGN IN A SCHEME NOT APPROVED IN WRITING BY PENDOCK.

THIS DRAWING MUST NOT BE LENT OR COPIED, AND THE DESIGN MUST NOT BE COPIED, COPYRIGHT AND DESIGN RIGHT IN THIS DRAWING RESTS WITH PENDOCK.

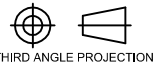
THE CUSTOMER OR ITS CONTRACTOR OR AGENT IS RESPONSIBLE FOR VERIFYING THE ACCURACY AND SUITABILITY OF THE DESIGN IN THIS DRAWING.

PENDOCK STANDARD TERMS AND CONDITIONS, DETAILED ON SUPPORTING QUOTATIONS APPLY.

## NOTES

|     |      |    |     |
|-----|------|----|-----|
| REV | DATE | BY | APP |
|-----|------|----|-----|

GENERAL INFORMATION  
ALL DIMENSIONS IN MM  
UNLESS OTHERWISE STATED



THIRD ANGLE PROJECTION

|      |       |         |          |
|------|-------|---------|----------|
| DATE | DRAWN | CHECKED | APPROVED |
|------|-------|---------|----------|

CLIENT/PROJECT

Circular  
GRG Column

PROJECT DETAILS

Encasement  
Pendock Column

|       |     |       |        |    |
|-------|-----|-------|--------|----|
| SCALE | nts | SHEET | 3 of 3 | A4 |
|-------|-----|-------|--------|----|

|         |                    |     |   |
|---------|--------------------|-----|---|
| DWG No. | Installation Guide | REV | — |
|---------|--------------------|-----|---|