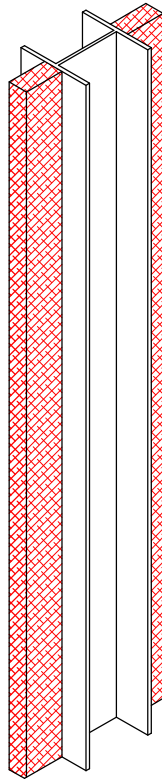
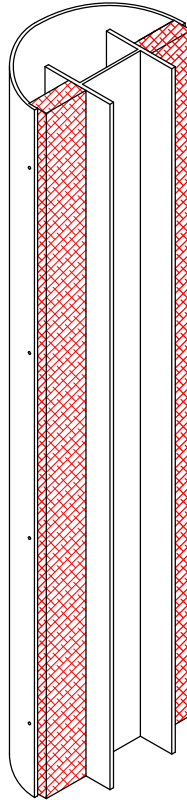


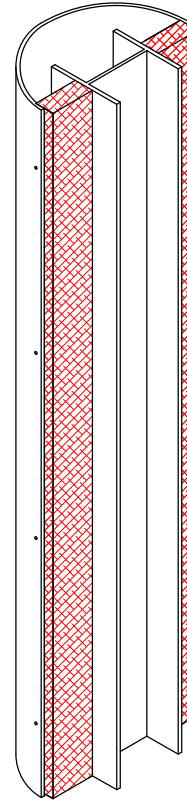
Internal Column Diameter



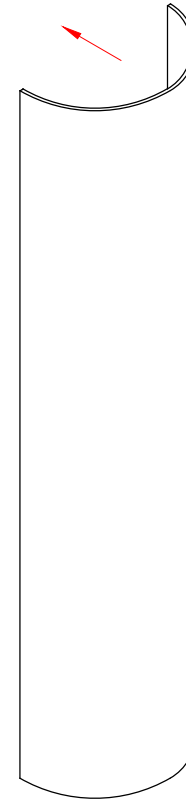
Position first half of column over fixed mullions leaving enough of the mullion exposed to install the second section of the column.



Using countersunk screws screwfix through the front face into the timber mullion ensuring that the column is perpendicular.



Position the second half of the column over the fixed timber mullion butting too and inline with the first section using a tourniquet to hold both halves into place, screwfix through the front face into the timber mullion.



# PENDOCK

Pendock  
Halesfield 19, Telford, Shropshire, TF7 4QT.  
Tel: +44 (0) 1952 580590 Fax: +44 (0) 1952 587805  
E-mail: technical@pendock.co.uk  
Web: www.pendock.co.uk

**THIS DRAWING MUST NOT BE SCALED**

© COPYRIGHT TP MANUFACTURING

THIS DRAWING MUST BE REVIEWED IN CONJUNCTION WITH ANY SUPPORTING QUOTATIONS REFERENCED.

THE DESIGN DETAILED IN THIS DRAWING FORMS PART OF A PROPOSED SOLUTION. ALL QUANTITIES AND MEASUREMENTS MUST BE CHECKED IN CONJUNCTION WITH SUPPORTING QUOTATION AGAINST CLIENTS REQUIREMENTS. SPECIFIC CONSIDERATION SHOULD BE GIVEN TO DIMENSIONAL ACCURACY (INCLUDING INT. CLEARANCE).

PENDOCK SHALL NOT BE LIABLE FOR ANY CLAIM ARISING OUT OF THE USE OF THIS DESIGN IN A SCHEME NOT APPROVED IN WRITING BY PENDOCK.

THIS DRAWING MUST NOT BE LENT OR COPIED, AND THE DESIGN MUST NOT BE COPIED, COPYRIGHT AND DESIGN RIGHT IN THIS DRAWING RESTS WITH PENDOCK.

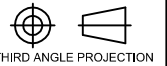
THE CUSTOMER OR ITS CONTRACTOR OR AGENT IS RESPONSIBLE FOR VERIFYING THE ACCURACY AND SUITABILITY OF THE DESIGN IN THIS DRAWING.

PENDOCK STANDARD TERMS AND CONDITIONS, DETAILED ON SUPPORTING QUOTATIONS APPLY.

## NOTES

REV	DATE	BY	APP
-----	------	----	-----

GENERAL INFORMATION  
ALL DIMENSIONS IN MM  
UNLESS OTHERWISE STATED



THIRD ANGLE PROJECTION

DATE	DRAWN	CHECKED	APPROVED
------	-------	---------	----------

CLIENT/PROJECT

Circular  
GRG Column

PROJECT DETAILS

Encasement  
Pendock Column

SCALE NTS	SHEET 2 of 3	A4
-----------	--------------	----

DWG No.	REV
---------	-----

Installation Guide

—